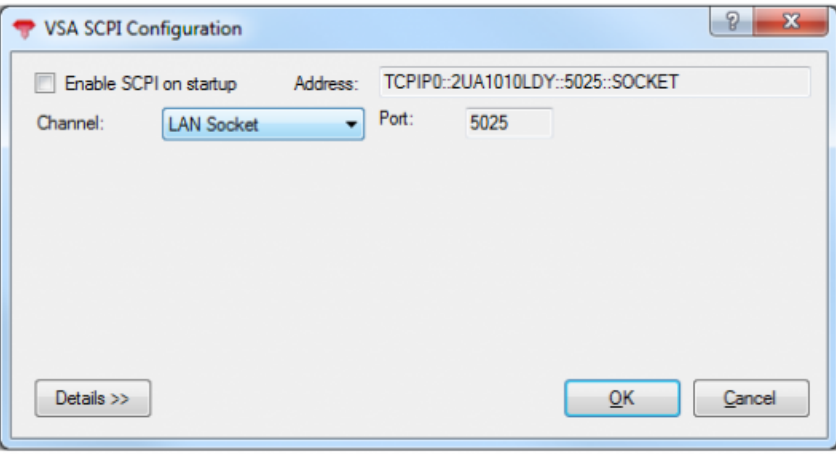


Configuring SCPI

To enable the VSA's SCPI interface, select the **Utilities > SCPI Configuration...** item from the main menu of the 89600 VSA application to start the **VSA SCPI Configuration** tool, which is shown below:



Select the desired channel (LAN Telnet or LAN Socket) to enable the SCPI listener. Optionally, select the **Enable SCPI on startup** check box to start the SCPI interface each time the computer restarts. Select **OK** and the SCPI interface will be ready to use.

**TIP** The instrument VISA address (shown in the **VSA SCPI Configuration** tool above) uses the computer's hostname (2UA1010LDY in this case), but you can instead use the hosting computer's IP address when connecting to the SCPI interface from another computer.

**NOTE** The LAN Socket connection does not support the IPV6 protocol. If your hostname resolves to an IPV6 IP address, you will need to use your IPV4 IP address in place of the hostname when specifying the VISA Address when you connect to the SCPI interface.

DOWNLOAD: <https://tinturli.com/2a0g0l>

Download

2957c398a2

Related links:

- <http://gnebensfoxcomp.unblog.fr/2021/12/01/rabbids-invasion-full-episodes-95/>
- <https://assets.pinshape.com/uploads/image/file/455186/Descargar-Keygen-AutoCAD-MEP-2010.pdf>
- <https://www.pixnet.net/pcard/2446960b09df/d6e91d/article/0620fce0-524e-11ec-b159-df21ede8bd69>
- <https://kingkevin84.wixsite.com/lodebiri/post/chimica-lambiente-ahan-11-ebook-utorrent-zip-full-epub>
- <http://elegra.ph/Mc-The-Death-Pierrot-1201>
- <https://assets.pinshape.com/uploads/image/file/455185/xantaav.pdf>
- <https://assets.pinshape.com/uploads/image/file/455184/Dewa-19-Pandawa-Lima-CD-FLAC-1997Jokowi-forycotho.html>
- <https://assets.pinshape.com/uploads/image/file/455186/Descargar-Keygen-AutoCAD-MEP-2010.pdf>
- <https://assets.pinshape.com/uploads/image/file/455182/Bhs-Compacta-Answer-Key-Class-8.pdf>
- <https://assets.pinshape.com/uploads/image/file/455183/darvicomp.html>