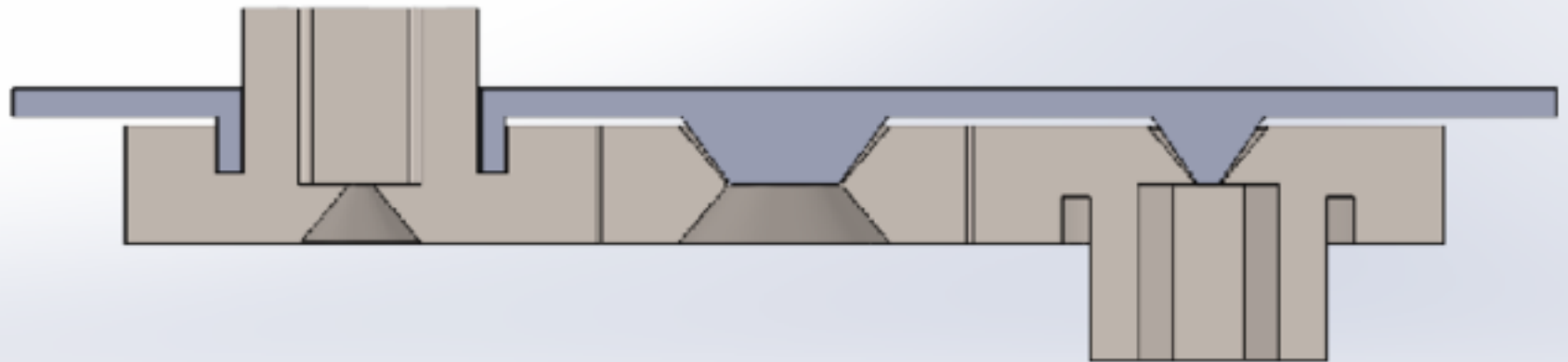
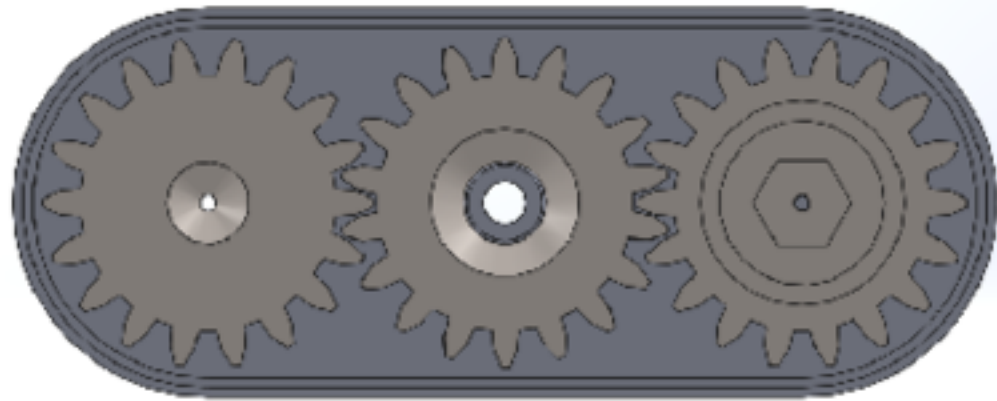
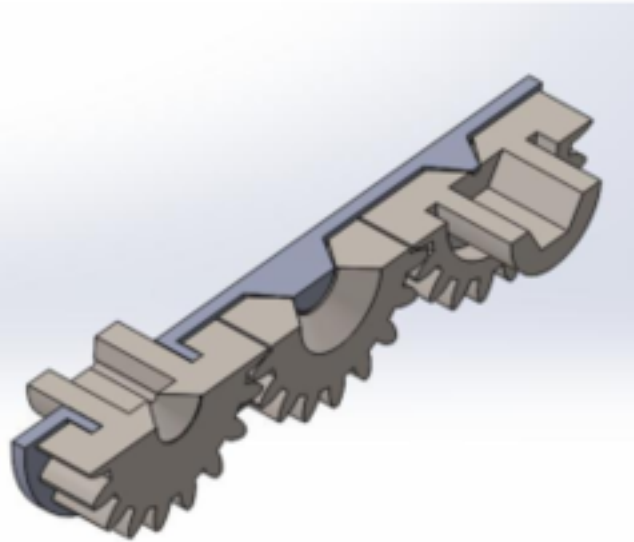
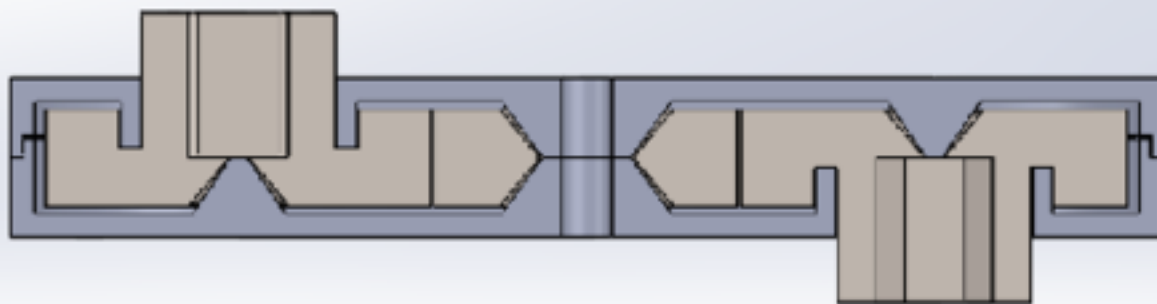
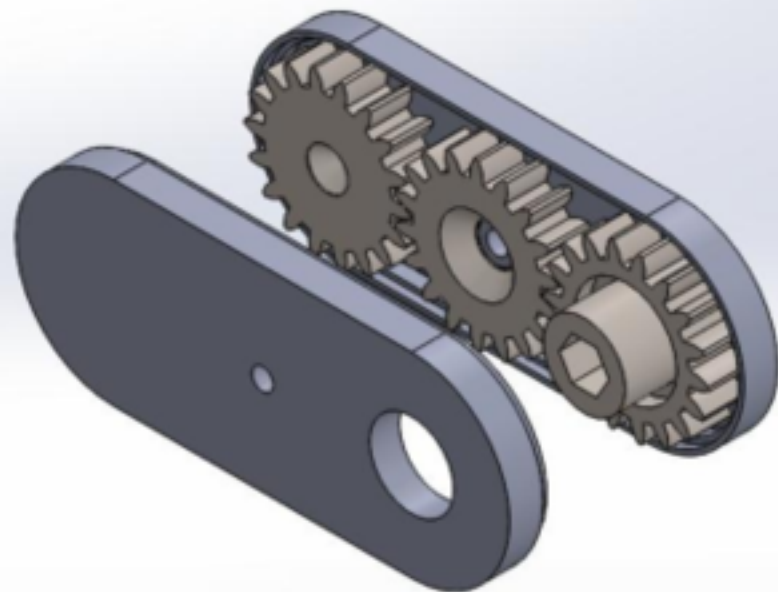
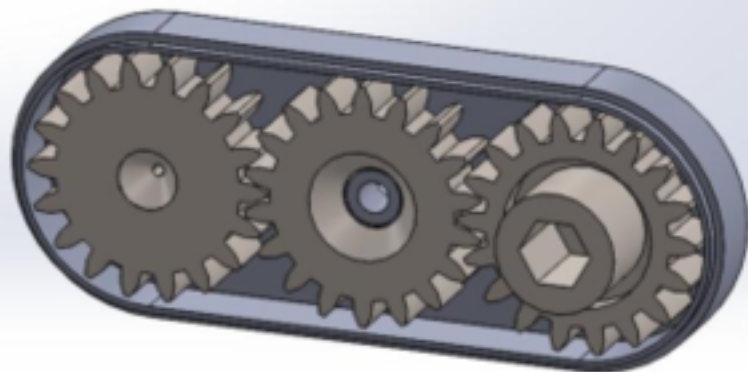


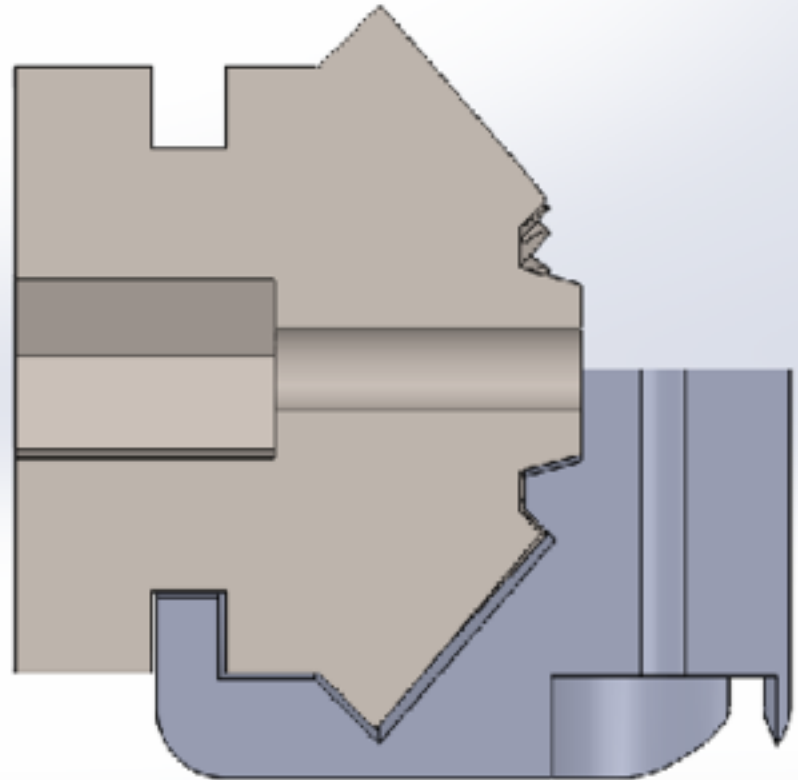
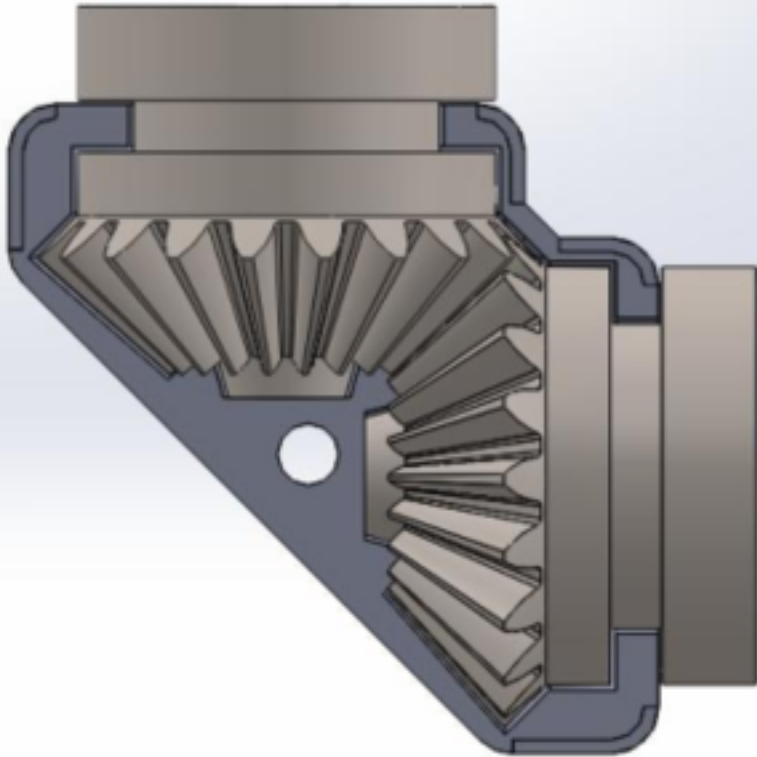
MECHANICAL CLEARANCE DETAIL



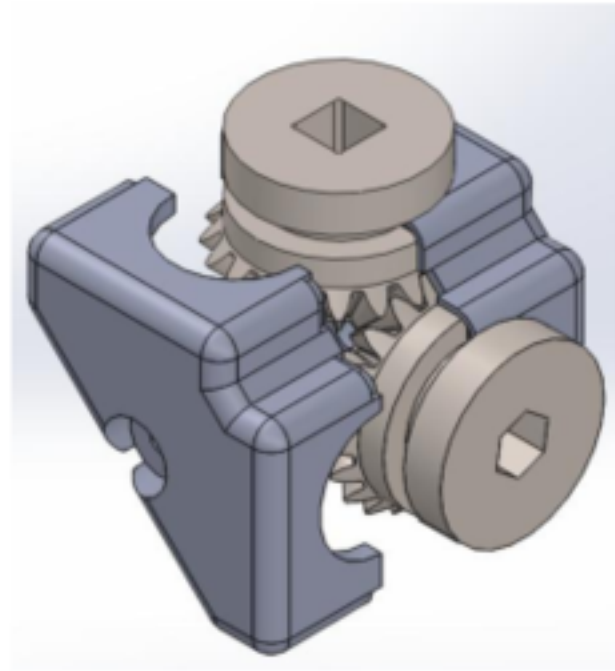
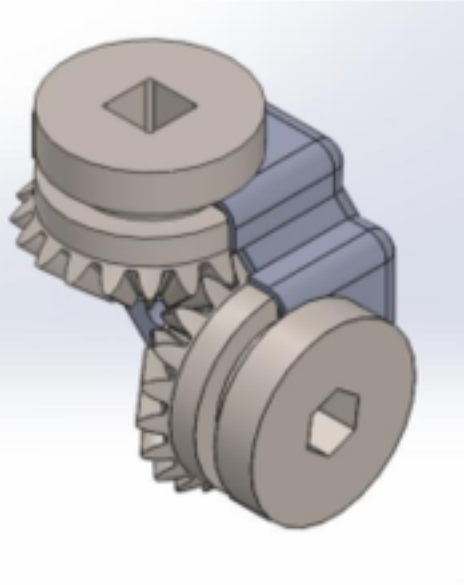
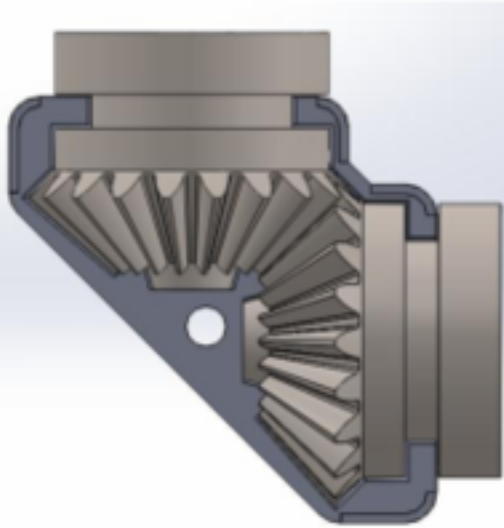
ASSEMBLY DETAIL



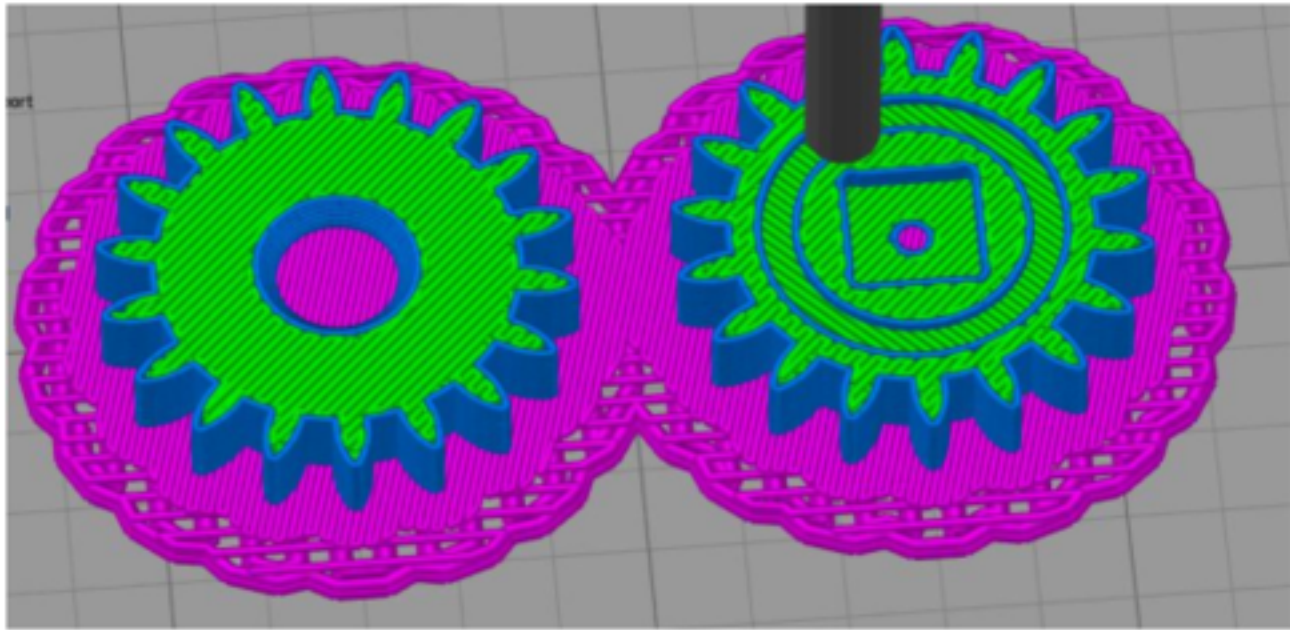
MECHANICAL CLEARANCE DETAIL



ASSEMBLY DETAIL



RECOMMENDED PRINTING SETTINGS



Any standard printing settings should work with the design, however the following recommendations are to maximize the strength of the gears.

Layer height: 0.2mm or less

Perimeters: 1

Infill: 100% (Note: Use only solid layers to fill the gaps in the teeth.)

Speed: 85 mm/s